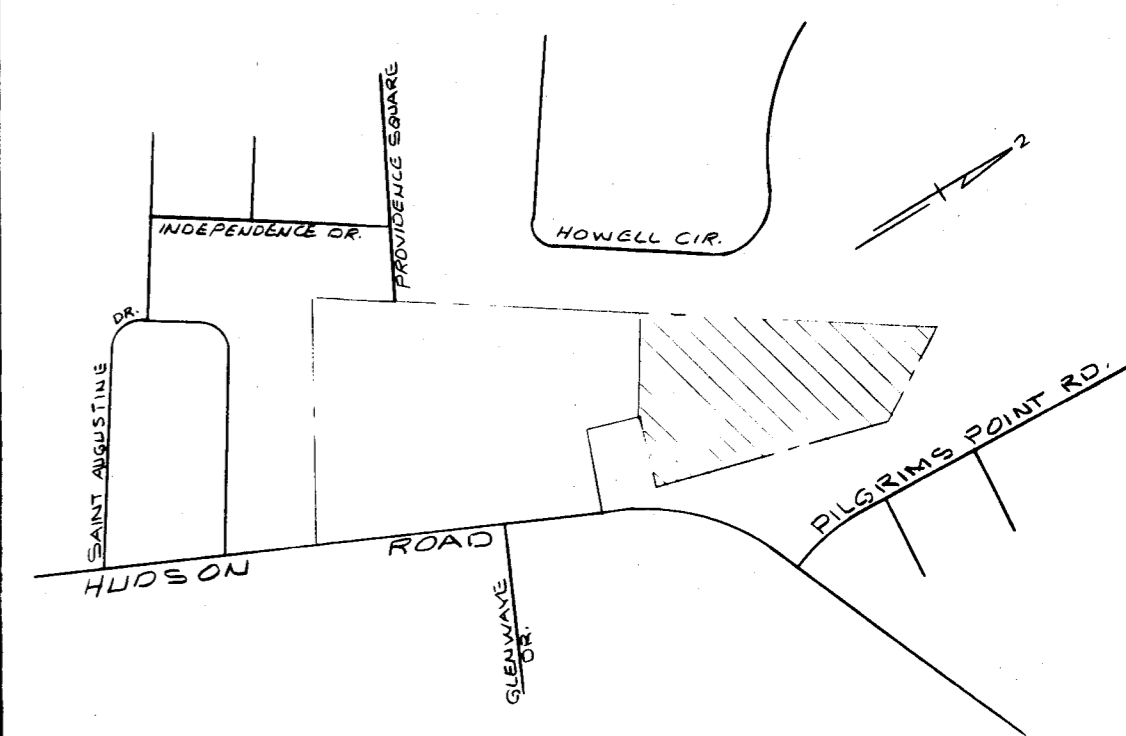


For Ded. of Roads
See Dedication Book
Vol. J Page 108

FILED
GREENVILLE CO. S. C.
SEP 13 2 24 PM '72
ELIZABETH RIDDLE
S.J.C.



LOCATION MAP

CERTIFICATE OF OWNERSHIP AND DEDICATION

The undersigned hereby acknowledge that I am (we are) the owner(s) of the property shown and described hereon and that I (we) hereby adopt this plan of subdivision with my (our) free consent and that I (we) establish the minimum building restriction lines, and hereby dedicate to public use as roads, streets, and easements, forever all areas so shown or indicated on said plat.

8/21/72 Signed: *R. Gerald Lee, Pres.*
Signed: *Southland Properties, Inc.*
Signed: _____
Signed: _____

CERTIFICATE OF ACCURACY

"I, ARON M. THOMPSON, certify that this plat was (drawn by me) (drawn under my supervision) (an actual survey made under my supervision) (an actual survey made by me) (aged description recorded in Book 949, Page 33, Book 949, Page 7, of the (GCR); that the error of closure as calculated by the method of least squares is 1/3000; that the boundaries not surveyed are shown as broken lines plotted from information found in Book _____, Page _____; that this plat was prepared in accordance with the Greenville County Subdivision Regulations as adopted.

8/23/72 Date
Aron M. Thompson
Licensed Surveyor of Registered Surveyor
S. C. Registration No. 3616

CERTIFICATE OF APPROVAL FOR RECORDING

"I hereby certify that the subdivision plat shown hereon has been found to comply with the Subdivision Regulations for Greenville County, with the exception of such variances, if any, as are noted in the minutes of the Greenville County Planning Commission of Greenville County, South Carolina, and that it has been approved for recording in the office of the County Register of Mense Conveyance."

8-25 1972
J. Chanan Jones
Chairman, Secretary, or Director of
Planning
Greenville County Planning Commission

PERFORMANCE BOND POSTED FOR RECORDATION APPROVAL

No county street maintenance will take place on any street shown on this plat until the release of this bond.

Bond Release: _____
19 _____ Director of Planning
Greenville County
Planning Commission

FINAL PLAT
FILE NUMBER 72-142

STRATTON PLACE
SHEET 2 OF 2

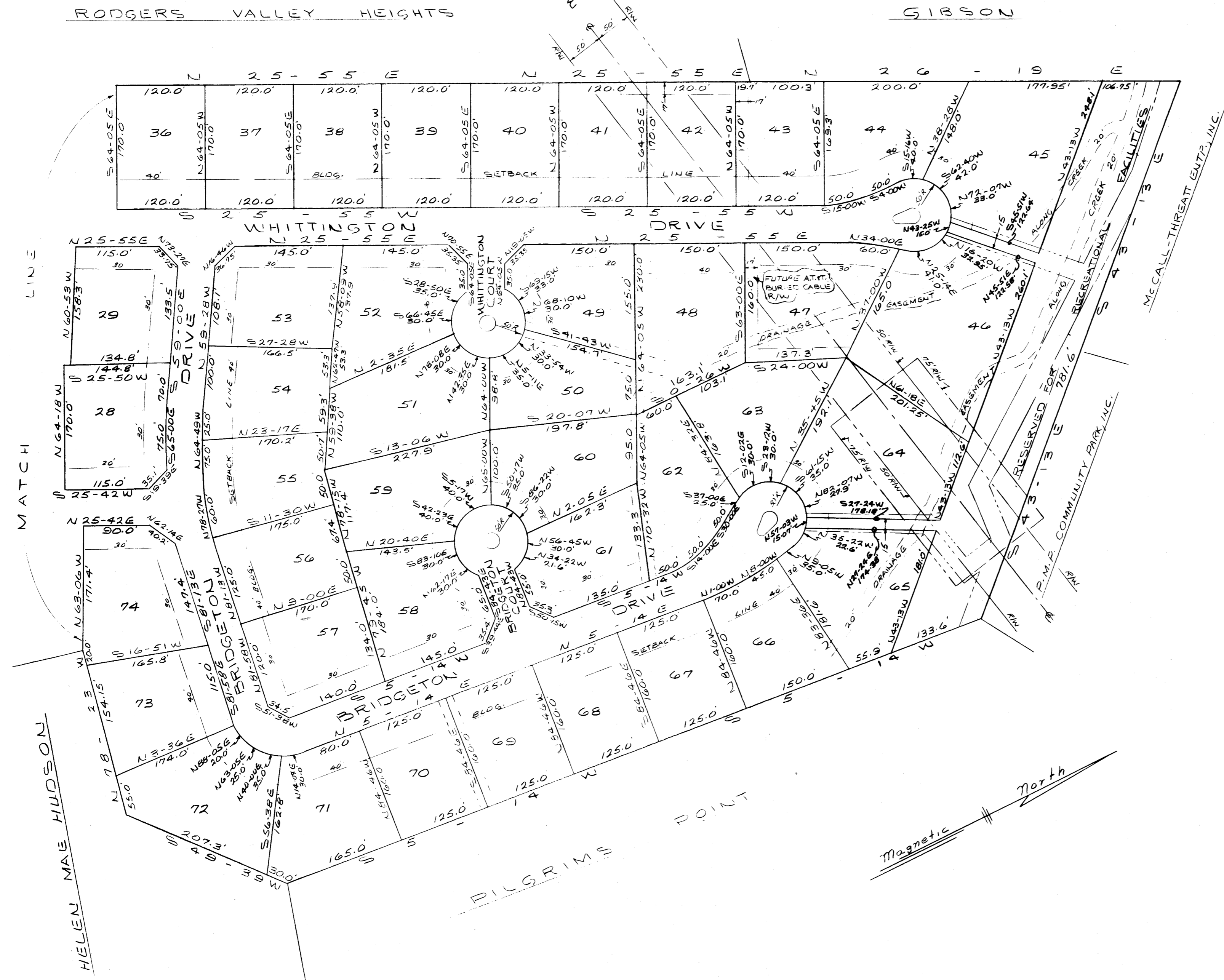
SOUTHLAND PROPERTIES, INC. OWNER
PIEDMONT ENGINEERS & ARCHITECTS SURVEYOR

NO. OF ACRES SEE SHEET 1 MILES OF NEW ROADS SEE SHEET 1

NO. OF LOTS SEE SHEET 1 DATE JULY 10, 1972

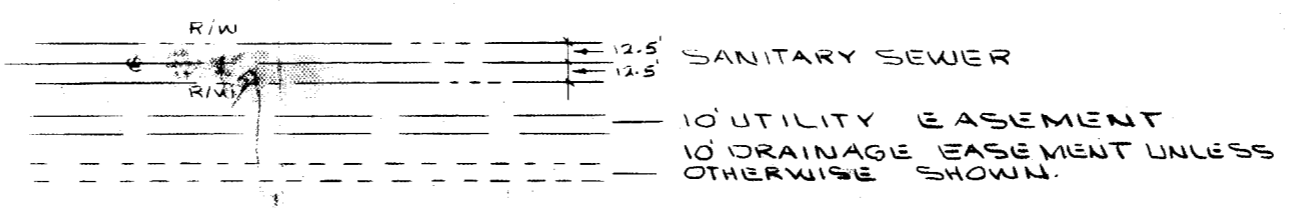
ERROR OF CLOSURE 1/3000

SCALE 1" = 100'



4637 L Sept. 7
4R 37

LEGEND



NOTE: 10' UTILITY & DRAINAGE EASEMENTS EACH SIDE OF ALL SIDE & REAR LOT LINES.

4R-37